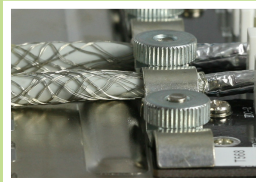
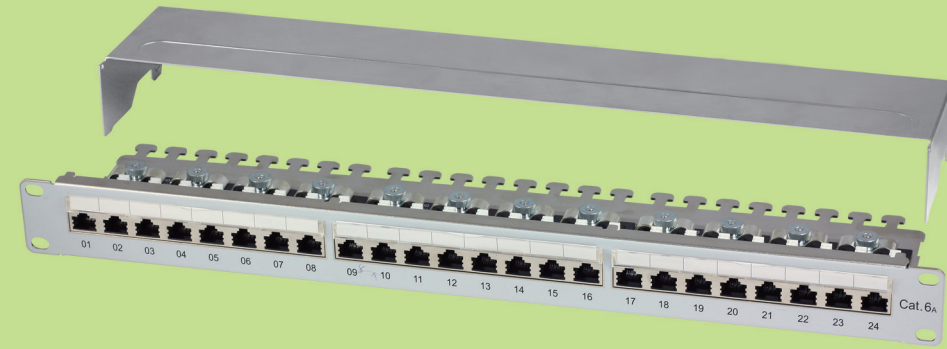


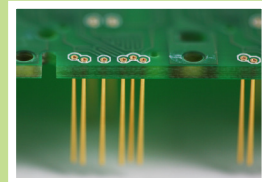
Class E_A/Cat.6A 24P Patch Panel (Auto press-fit)

LA246ASTX STP 90° Patch Panel

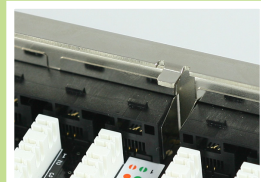
- Qualified Screened Class E_A /Cat.6A (10G/500MHz)
- Complied with IEC 60603-7-51
- ISO/IEC 11801 2.2 Edition
- CENELEC EN 50173-1:2011
- ANSI/TIA-568-C.2



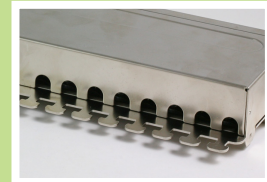
Raised metal tray improves better contact resistance and transfer impedance.



Press-fit process. 100% RoHS compliant, without soldering.

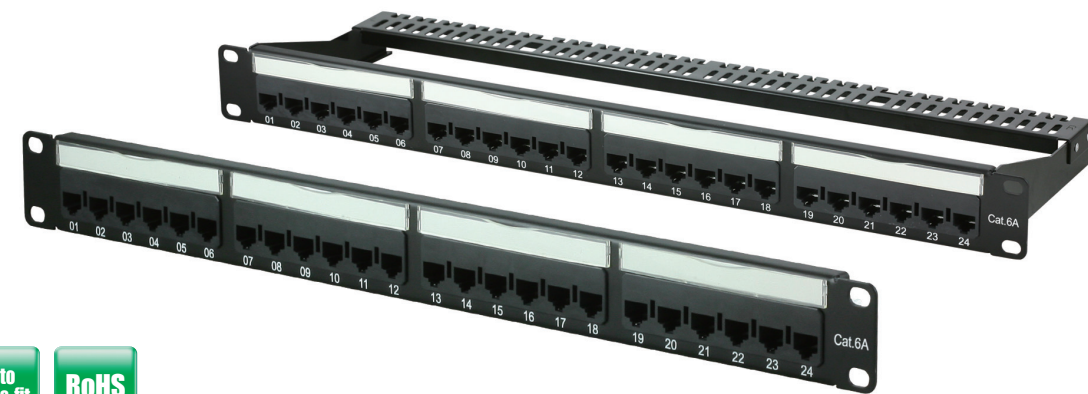


Metal cover and hinge design for better EMC.

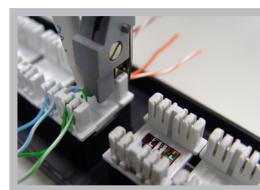


Cave-type design for better EMC.

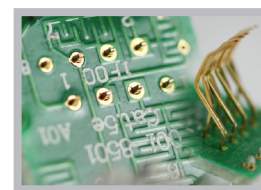
JB246AUC UTP 180° Patch Panel w/cable management



IDC block cover to secure terminated wires.



Using Krone/110 tool. Accepts AWG 23-26 solid and stranded cables.



Press-fit process. 100% RoHS compliant, without soldering.

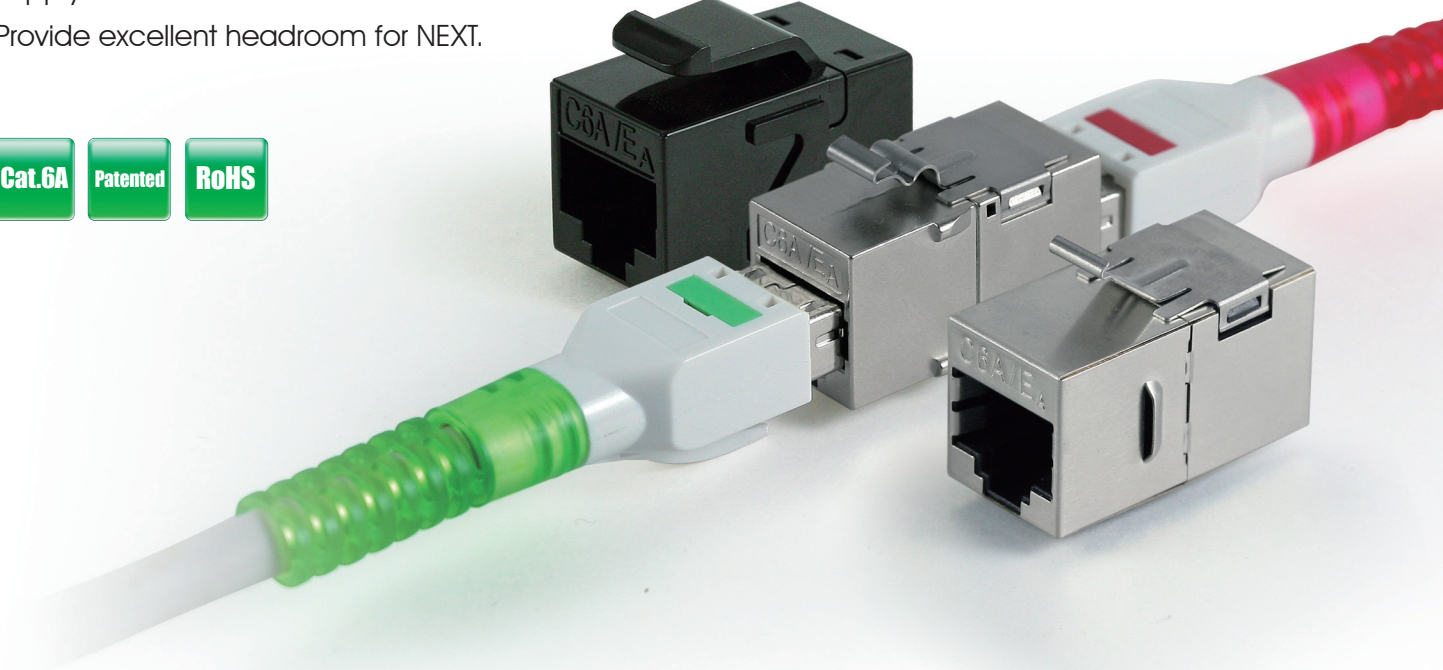


Cable Management (CMP1). Easy assembly.

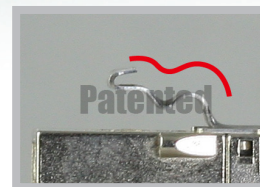
Class E_A/Cat.6A Coupler

TA196BUS/TA196BDS/TA196BSS

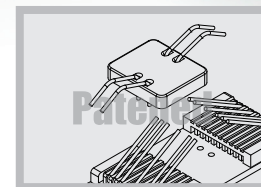
- Slim and compact, available for 24 ports patch panel.
- Supply extension solution.
- Provide excellent headroom for NEXT.



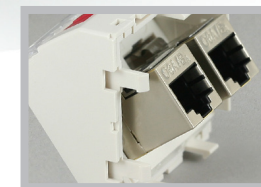
Special contact fingers to press modular plug's metal, reducing the contact resistance and transfer impedance.



Double arcs metal clip for increasing metal strength and flexibility. Cutout size 19~20mm.



Patented "spider" design, and contact pins for reducing crosstalk between two Jacks.



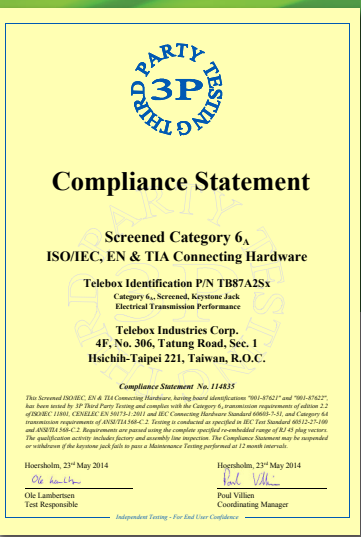
Tiny dimension, it fits in various face plates and wall plates.

Patented of spider contacts for reducing crosstalk



Applied Permanent Link Configuration

Cat.6_A Connecting Hardware ISO/TIA Class E_A / Cat.6A Press-fit Technology



Copper Cabling Technology

- Plugs / Patch Cords
- Keystone Jacks
- Couplers
- Patch Panels
- Outlets



Telebox Industries Corp.

浩揚工業股份有限公司

4F, No. 306 Tatung Road, Sec. 1, Hsichih-Taipei 22146, Taiwan

Tel : +886-2-26429337

Fax : +886-2-26425779

E-mail: sales@telebox.com

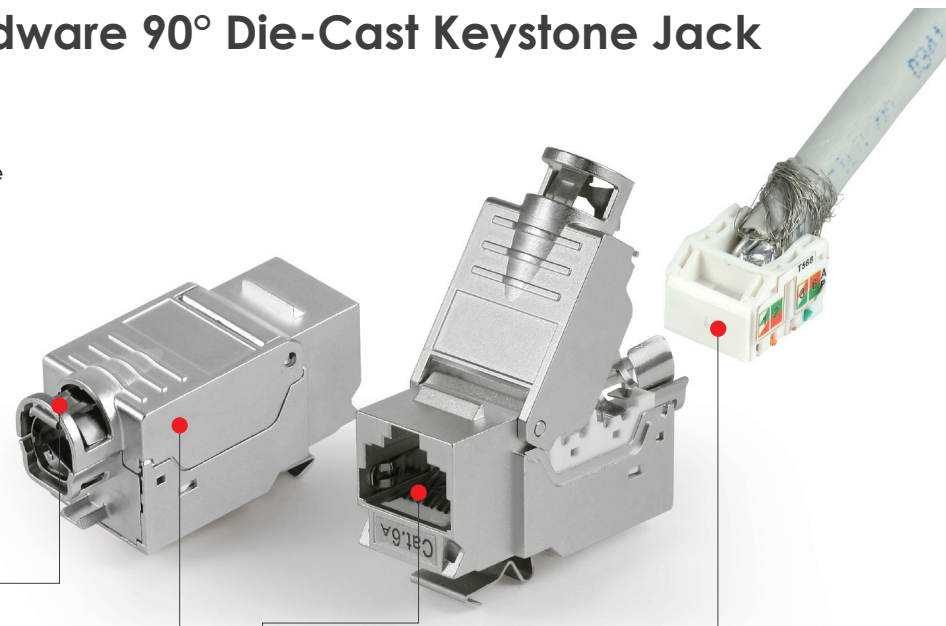
http://www.telebox.com



Cat.6A Connecting Hardware 90° Die-Cast Keystone Jack

TB97A2DD

- Qualified Screened Cat.6A Connecting Hardware
- Complied with IEC 60603-7-51
- ISO/IEC 11801 2.2 Edition
- CENELEC EN 50173-1:2011
- ANSI/TIA-568-C.2



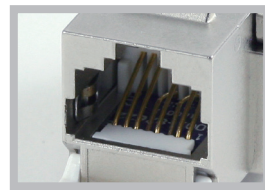
360° Braided Cover: provide better EMC, contact resistance and transmission.



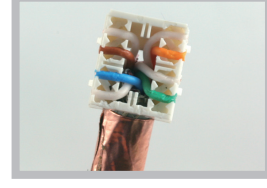
IDC contacts: IDC layout for better crosstalk performance. For AWG 23-26 solid wire.



Main board & daughter board technology.



Unique design can resist RJ11/ RJ12 for 200 insertions.



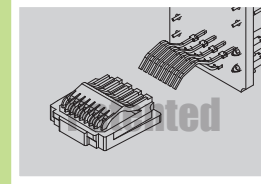
Wire management, easy to separate the wires and change pair sequence and not tangle the wires.

Class E_A/Cat.6A 180° Keystone Jack



TB916AUD UTP Keystone Jack

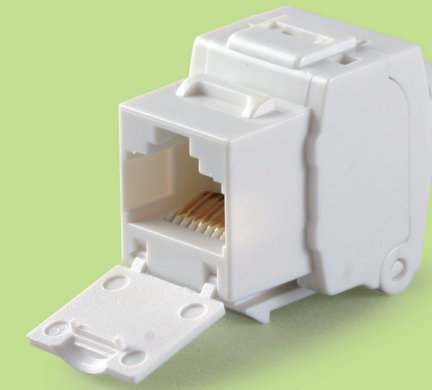
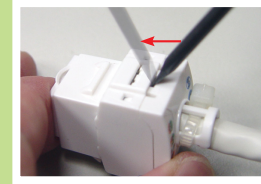
Patented contact support can resist RJ11/ RJ12 for 200 insertions.



Tool free, press with click to terminate wires.

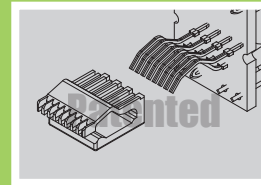


Smart design easy to dismount.

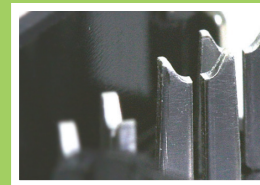


TB906ADD Die-Cast Keystone Jack

Patented contact support can resist RJ11/ RJ12 for 200 insertions.



IDC contacts: IDC layout for better crosstalk performance.



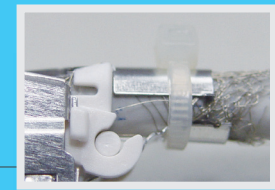
360° Braided cover, provide better EMC, contact resistance and transmission.



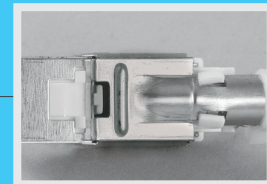
Cat.6A Connecting Hardware 90° STP Keystone Jack

TB87A2SD

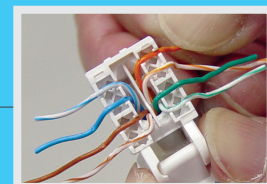
- Qualified Screened Cat.6A Connecting Hardware
- Complied with IEC 60603-7-51
- ISO/IEC 11801 2.2 Edition
- CENELEC EN 50173-1:2011
- ANSI/TIA-568-C.2



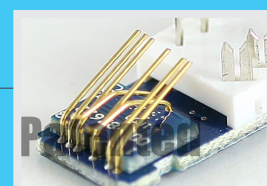
Copper braid can be fully contacted and covered for AWG 23-26 solid wire.



Robust shield cover geometry for better contact resistance and transfer impedance.



IDC Cap: easy to separate and change pair sequence and not tangle the wires.



Spring loaded metal finger for contact resistance.

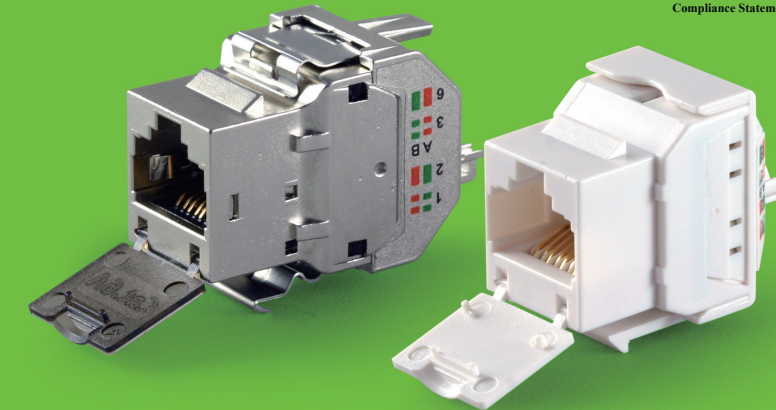


TB806ASD/TB806AUD Keystone Jack

- Shield fingers for better contact resistance and transmission.
- IDC layout for better crosstalk performance.
- Unique design can resist RJ11/ RJ12 for 200 insertions.
- Double arcs metal clip for increasing metal strength and flexibility.



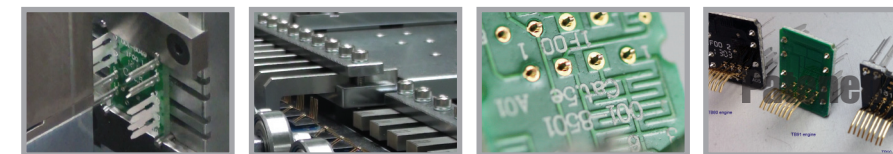
Patented metal clip.



Automatically pressing IDC and Contacts into PCB

Advantages of Press-fit Connectors:

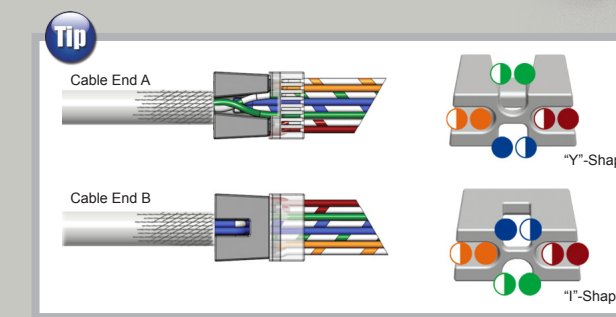
- Stable and reliable form of the contact
- Time-saving production
- Cost effective, no manual soldering
- Environmentally friendly
- Reduced inspection process



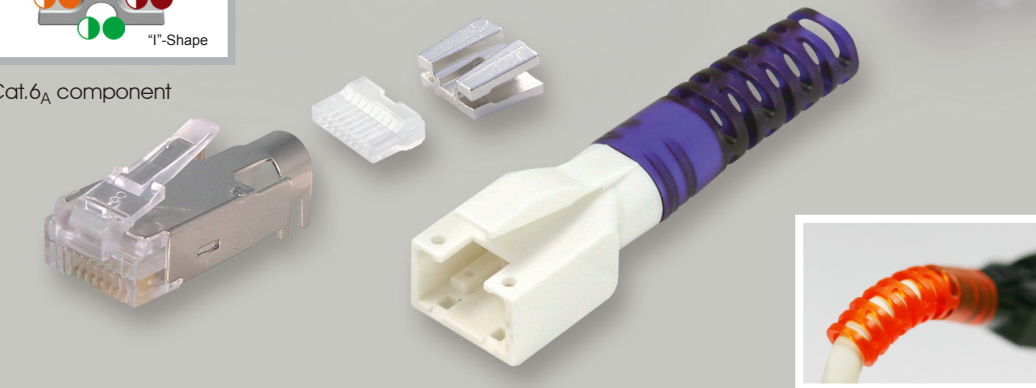
Cat.6A STP/UTP Field Modular Plug

TA336A-DS STP RJ45 Plug

- Field assembly RJ45 STP plug for stranded cable AWG 24-27/7.
- Provides exceptional ANEXT in Cat.6A Connecting Hardware performance.
- Flexibility and multicolored identification.
- RoHS compliant.

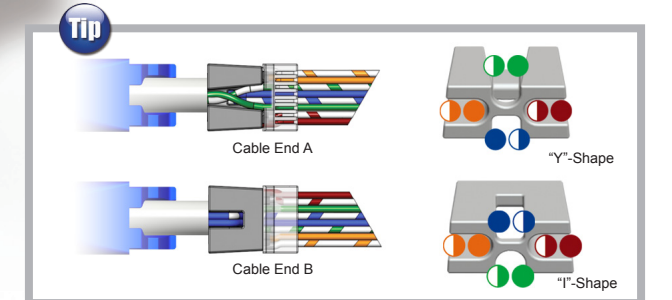


Patented metalized organizer to Cat.6/Cat.6A component performance.



TA336A-DU UTP RJ45 Plug

- Field assembly RJ45 UTP plug for AWG 23-24/1 and AWG 24-27/7.
- Provides exceptional headrooms for Cat.6A Connecting Hardware performance.
- RoHS compliant.



Patented metalized organizer to Cat.6/Cat.6A component performance.