

**TB6968XX Cat.6 UTP/STP Coupler (Auto press-fit)**



**Specification:**

Qualified Cat.6/Class E  
 Permanent Link/Channel of TIA-568-C.2  
 ISO/IEC11801 2nd Edition  
 EN50173 2nd Edition  
 IEC60603-7

**Electrical:**

Current rating: 1.5 Amps  
 Insulation resistance: 500 Mohms minimum  
 Contact resistance: 20 mohms maximum  
 DC resistance: 0.1 ohms maximum

**Material:**

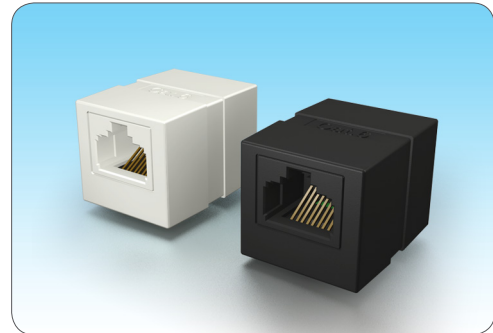
Plug insertion life: 750 Cycles minimum  
 Plug & Jack contact force: 100 Grams minimum  
 Using FCC-Approved Plug  
 Plug retention force: 30 lbs minimum  
 Temperature: -40°F to 150°F (-40°C to 68°C )Maximum

**Physicals:**

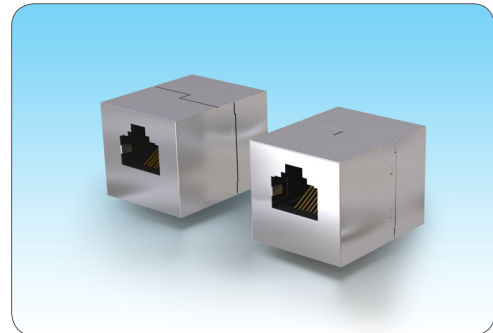
Housing: High impact flame retardant plastic, UL 94V-0 rated  
 PCB: FR4 1.0mm thickness

**Ordering Information:**

<b>TB69</b>	<b>6</b>	<b>8</b>	<b>X</b>	<b>X</b>	<b>-</b>	<b>XX</b>
6 : CAT.6	8 : RJ45	U : Unshielded	S : PIN 1-1	BK : BLACK		
		S : Shielded	C : PIN 1-8	IV : IVORY		



TB6968UX



TB6968SX